

triton cloud vgTM

EDGE WRAPPED ACOUSTIC CEILING PANEL



TECHNICAL DATA SHEET BPIR - CLASS 1



triton cloud vgTM

Edge Wrapped Acoustic Ceiling Panel - α_w , NRC 0.95/1.00

Technical Data Sheet - BPIR Class 1

Triton CloudTM VG are an economical, wrapped edge, high sound absorbing ceiling panel with a crisp tailored finish.

Panels are rigid and designed as free floating or direct fix elements to control reverberation. Available in a range of standard sizes and decorative finishes.

Application

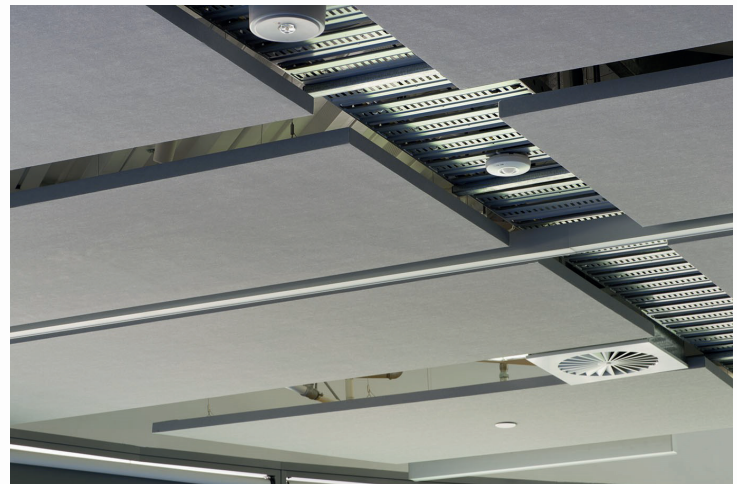
Triton CloudTM VG panels are ideal for economic ceilings in open plan offices, classrooms, meeting rooms, halls, cafes and bars where control of noise is required.

Composition

Made in NZ from non-combustible glass wool acoustic core with Sonatex acoustic laminate to 5 sides, tissue backed.

Features & Benefits

- Cloud VGTM are an economical, cost-effective option.
- High sound absorption, up to α_w /NRC 1.00, for noise control.
- Fire Group 1-S.
- **Ministry of Education DQLS V3.1 2024 compliant solution.**
- Range of standard sizes, and decorative finishes for design free-dom. Large modules up to 1100 mm x 2300 mm.
- Wide range of mechanical fixing solutions to direct fix or sus-pend panels.
- Dimensionally stable, rigid finish, no sag in hot conditions.
- Light weight for seismic design advantage.
- Easy to work on site using standard tools.
- GreenTag Certified / Level A.
- ISO 9001 registered quality management program.
- Packaging take back and reuse scheme (NZ only).
- Made in NZ, short lead times including replacement parts.



ISO 9001:2015 Registered Firm No. NZ1014

© 2024 Copyright ASONA Ltd, Asona, Triton Cloud VG, Sonatex are trade marks of Asona Ltd. KEY-LOCK and DONN DX are registered trademarks of Rondo Building Services Pty Ltd. All dimensions are nominal. We reserve the right to change specifications.
Ref. Triton Cloud VG-24.10

Asona Ltd. Office & Factory
6 Mahunga Drive, Māngere
Bridge, Auckland 2022
New Zealand
NZBN: 9429036035175

New Zealand
T: +64(0)9 525 6575
E: info@asona.co.nz
W: www.asona.co.nz

Australia
T: 1 800 240361
E: info@asona.com.au
W: www.asona.com.au

asona

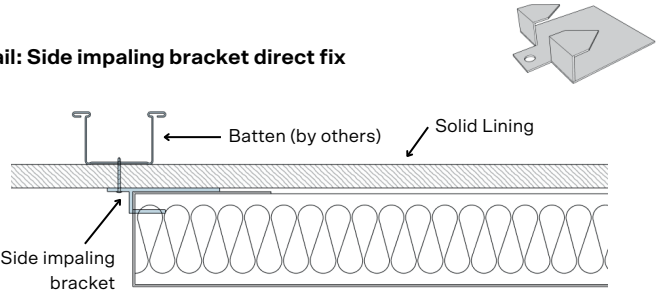
Triton Cloud Panel Mounting Solutions:

Triton Cloud™ VG panels may be direct fixed or suspended on a subframe or hangers. Asona offers a range of factory mounted or site applied mounting solutions to deliver the look and performance desired. Please select the system that works best for your project, consult Asona technical support for assistance. Asona technical support for assistance. Cloud VG panels may also be mounted on high level walls (above 2.4m) where a similar look is required to the ceiling.

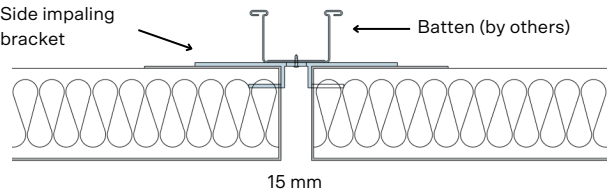
Refer to Asona Triton Cloud Installation Manual for full details.

#SIB Side Impaling Brackets are supplied separately and site installed. The prongs impale into the side of the panel to allow for direct fixing to solid linings or to a suspended frame. Typically 4-14 pcs per panel subject to panel size. Bracket may be visible, maintain 15mm minimum spacing between panels to allow for screws. Installer must use a panel lifter to support the weight of the panel during installation.

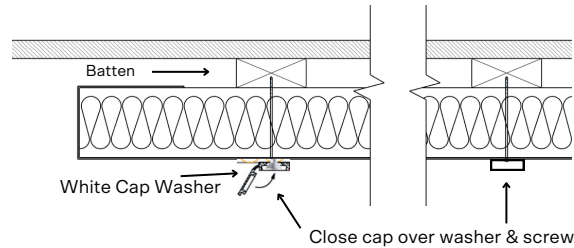
Detail: Side impaling bracket direct fix



Detail: Side impaling bracket direct fix to batten



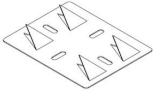
#FFX face fix panels direct to battens with a white cap washer and screw.



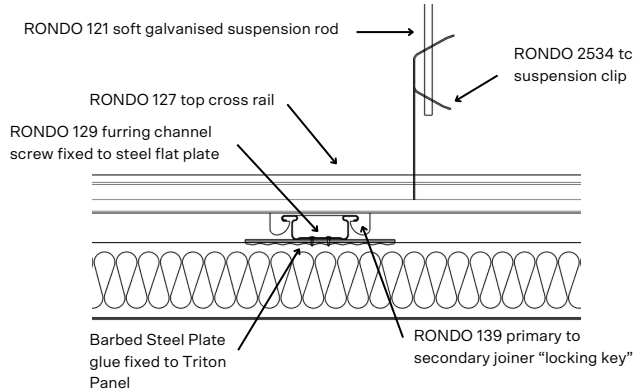
Note: Please select the required panel size and code then add mounting #SIB, SFP, FFX, or code to denote which fixing method is required. Eg: TC50VG.1224.SIB. Then add colour selection from Sonatex colour charts *We do not recommend glue only fixing unless used in conjunction with mechanical support.

Panel Mounting System	SIB	SFP	FFX
Direct fix to solid lining	x	x	x
Fix to suspended framing	x	x	x
Suspend on hanger wire		x	
Cost	\$	\$\$	\$

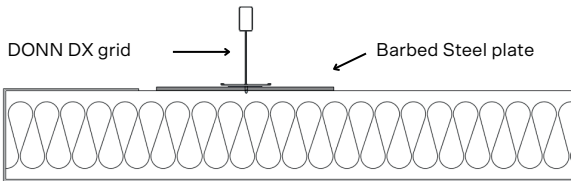
#SFP Barbed Steel Flat Plates are available to order. Plates are factory bonded to the rear of the panel and provide a hard fix point for suspension and seismic bracing. Allow 4 to 8 plates per panel (subject to size). Ideal for 'rafted' panel layouts. (Rondo KEY-LOCK® furring channel system as shown, supplied by Asona).



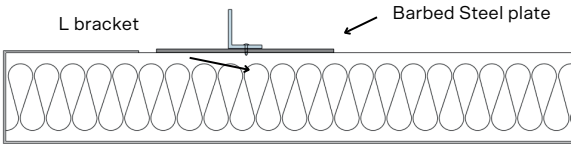
Detail: Barbed Steel Flat Plate for Rondo Keylock® system



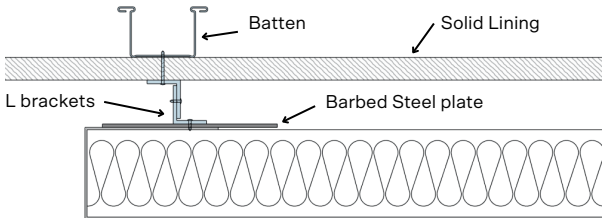
Detail: Barbed Steel Plate for Rondo DONN DX®



Detail: Barbed Steel Plate for L hanger bracket.



Detail: Barbed Steel Plate for "L to L" direct fix.



Technical Specifications

Standard panels in white, or black and grey Sonatex, or woodprint laminate finishes

Sizes	490 X 490 mm	490 x 1100 mm	1100 x 1100 mm	490 x 2300 mm	1100 x 2300 mm
50 mm	TC50VG.0505	TC50VG.0511	TC50VG.1111	TC50VG.0523	TC50VG.1123

Sound absorption rating. 'A' mount direct to concrete

ISO 354 ap practical absorption data, NRC 0.95 ASTM C423

	α_w	125Hz	250Hz	500Hz	1000Hz	2000Hz	4000Hz
TC50 ap	0.95	0.25	0.85	1.00	1.00	0.95	0.85

Sound absorption rating. E200 mount with cavity

ISO 354 ap practical absorption data, NRC 1.00, ASTM C423

	α_w	125Hz	250Hz	500Hz	1000Hz	2000Hz	4000Hz
TC50 ap	1.00	0.70	1.00	1.00	1.00	1.00	0.95

Environmental Impact:

Global GreenTag Certified, Level A, Contains 80% minimum recycled content, low VOC, soiled panels can be resurfaced with new acoustic facing to extend product life and reduce waste.

Laminate Finishes:

Triton Cloud™ VG are available in standard Sonatex™ white, black, grey, wood prints, and RAL colour finishes. Refer to online Sonatex™ finishes charts for colour and pattern selections. Other colours to order.

Light Reflectance Value:

85% per BS8493:2008, White, others subject to colour.

Limitations:

- For interior use only, and not in direct contact with water.
- Maximum humidity/temperature 99% R/H at 45°C.
- Back loading — No overlay loads, M&E services and point loads to be independently supported.

Maintenance:

Clean with a vacuum, soft brush or damp cloth. Re-surfacing of soiled panels available, consult Asona.

NZ Building Act

This product is not subject to a warning or ban under Section 26.

NZ Building Code Compliance:

- B2 Durability – Clause B2.3.1 (c) (i): Asona Triton Cloud™ VG with only normal maintenance will have a minimum durability of at least 5 years when installed in accordance with; manufacturer's installation requirements and AS/NZS 2785:2020.
- C3 Fire – Clause C/AS2 3.4(a): Asona Triton Cloud™ VG has a Fire Material Group Number 1-S for Sonatex™ and selected fabric finishes and installation method, by NZBC verification method C/VM2 Appendix A, tested in accordance with ISO 5660 or ISO 9705. (NCC BCA C1.10 clause 4, spec A2.4 clause 4. Group 1). Other fabrics & installation method 2-S, 2 and 3. Please consult Asona.

Recycling and Disposal:

Re-laminate with new Sonatex™ decorative finish to extend product life, may be used as thermal insulation on disposal.

Thermal Resistance:

R 1.47 m²C/W

Tolerances:

Width & Length +/- 2 mm



Triton CloudVG SIB installation

Warranty:

15 year limited warranty against manufacturing defects, extendable to 30 years when registered for Asona's Renew and Reuse program.

Weight:

2.7 kg/m²

Installation:

Installation shall not commence until the building is water tight and dry. Light/mechanical fittings shall be independently supported. Installation shall be in accordance with the selected fixing system and industry standards. Refer full Triton Cloud™ Installation Manual.

Specification:

Acoustical ceiling system shall be Asona Triton Cloud™ VG panel as manufactured and supplied by Asona Ltd, Tel: 09 525 6575 info@asona.co.nz, Panels shall be (direct fixed to structure) (fixed to suspended sub frame) (free hanging on wire). Selected panel shall be item # (), size 50 x () x () mm, finish shall be (Sonatex), colour (), mounting system shall be (SIB) (SFP) (FFX) Fire Group (1-S) α_w /NRC (0.95)(1.00). Contractor shall register the ceiling with Asona Renew and Reuse product stewardship program on practical completion. (Asona ceiling Masterspec 5172AA specification available).



ISO 9001:2015 Registered Firm No. NZ1014

© 2024 Copyright ASONA Ltd, Asona, Triton Cloud VG, Sonatex are trade marks of Asona Ltd. KEY-LOCK and DONN DX are registered trademarks of Rondo Building Services Pty Ltd. All dimensions are nominal. We reserve the right to change specifications. Ref. Triton Cloud VG-24.10

Asona Ltd. Office & Factory
6 Mahunga Drive, Māngere
Bridge, Auckland 2022
New Zealand
NZBN: 9429036035175

New Zealand
T: +64(0)9 525 6575
E: info@asona.co.nz
W: www.asona.co.nz

Australia
T: 1 800 240361
E: info@asona.com.au
W: www.asona.com.au

asona